



How To Conduct Safety Induction for New Employees at Site

Welcome to our comprehensive guide on conducting safety induction for new employees at site. In this presentation, we will explore the importance, legal requirements, key elements, safety rules, emergency response protocols, PPE requirements, assessment procedures, and conclude with a commitment to employee safety.

Importance of Safety Induction

Start by explaining the significance of safety induction. Emphasize that safety is a top priority for the organization and that it's everyone's responsibility. Highlight the potential consequences of not following safety protocols, such as injuries, accidents, or legal issues.

Legal Requirements

Discuss the legal requirements that govern workplace safety, including relevant local, state, and federal laws. Explain the consequences of non-compliance, which may include fines, legal actions, or site shutdowns.

Key Elements of Safety Induction

Safety Policies and Procedures

Introduce employees to the general safety applicable at the site, emphasizing their role in maintaining a safe working environment.

Site-Specific Hazards

Familiarize employees with potential hazards they may encounter at the site, ensuring they are equipped to identify and mitigate risks.

Safe Work Practices

Highlight specific safety procedures for different scenarios to promote the adoption of safe work practices in all aspects of the job.

Occupational Health

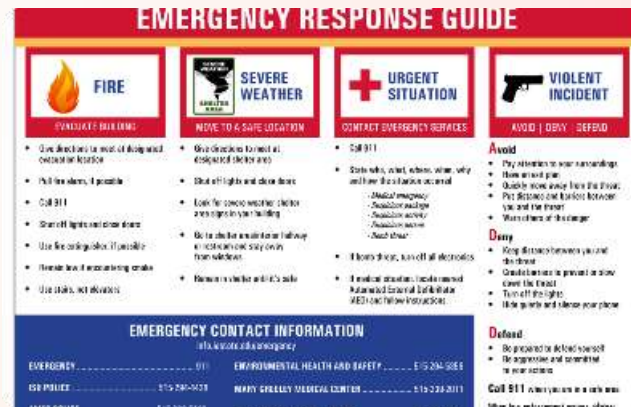
Emphasize the importance of maintaining good occupational health, including ergonomic practices and personal hygiene.

Emergency Response and Evacuation



Emergency Response Procedures

Outline the step-by-step emergency response ensuring employees are adequately prepared to handle unexpected situations.



Evacuation Protocols and Assembly Points

Explain the evacuation in case of an emergency and clearly define the assembly where employees should gather for a headcount.



Fire Safety Precautions

Highlight the importance of fire fire safety, including fire extinguisher locations, evacuation routes, and fire procedures.

Personal Protective Equipment (PPE)

Importance of PPE

Discuss why using the appropriate personal protective equipment is critical for ensuring employee safety and preventing workplace

Types of PPE

Review the specific types of personal protective equipment required on site, covering head protection, eye protection, respiratory equipment, and more.

Safety Rules

Go over the safety rules and regulations in detail. Ensure employees understand the consequences of not adhering to these rules, which may range from verbal warnings to termination. Common safety rules may include:

- No horseplay on the site.
- No unauthorized entry to restricted areas.
- Reporting unsafe conditions or incidents promptly.
- Proper use and maintenance of safety equipment.

Assessment and Evaluation

Conduct assessments to ensure employees understand and can apply the safety information provided. This may include written tests, practical demonstrations, or a Q&A session.



Document the Induction

Keep records of the safety induction, including attendance, signed pledges, and assessment results, for compliance and future reference.



Conclusion

In conclusion, safety induction for new employees at site is vital for establishing a culture of safety and minimizing workplace hazards. Recap key points covered in the presentation and reiterate the commitment to prioritize employee safety above all else.